

# Transitions

Convey a Tone or Mood, Suggest the Passage of Time...



## Standard Cut

Shots are simply played one immediately after the other.

**Often Used For:** Nearly any situation; it's the most common, quick, least distracting way to join two shots.



## Cross Dissolve

The first shot gradually disappears as the second shot fades in.

**Often Used For:** Suggesting that time has passed between scenes; sometimes used to signify a change of location.



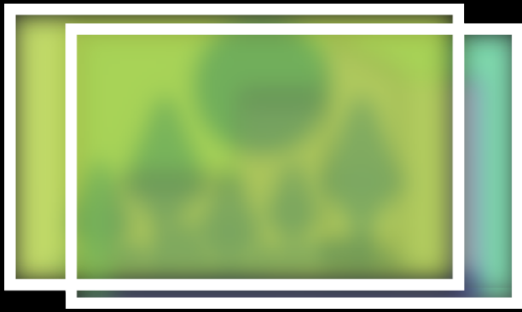
## Fade (to Black / to White)

Image gradually disappears to reveal a single color/blank image (usually black or white).

**Often Used For:** Signifying the beginning / end of a scene .

- Black - the END
- White - to be continued?





## Cross Blur

The video becomes blurry as the first shot dissolves, focus returns after the second shot fades in.

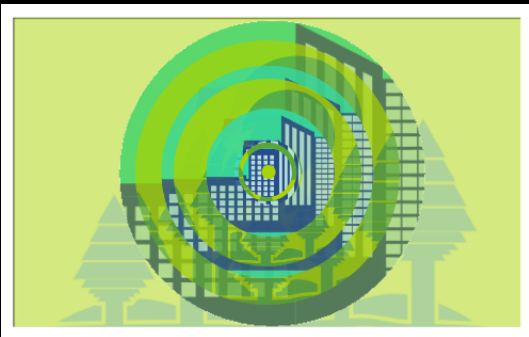
**Often Used For:** Suggesting the passage of time within a scene. It's sometimes used to transition to dream or fantasy sequence.



## Wipe

One shot replaces another, typically by traveling from one side of the frame to the other.

**Often Used For:** To show a change of location/ continued action between shots.



## Ripple

Creates ripples like waves expanding across water to reveal the next shot.

**Often Used For:** Indicating a change to a flashback or memory.

## Transition Tips:

- **Be Intentional** *Don't distract from the video.*
- **Be Consistent** *Using too many different types looks amateur.*
- **Be Subtle** *Transitions should not draw attention to themselves.*
- **Use Sparingly** *A standard cut between clips is most commonly used.*

